

1. Remove the bumper and disassemble the original grille.
2. Prepare the carbon grill, assembly kit and tools.
3. Install the sensors in the holes in the grill.
4. The sensor connector sockets should face the center of the grill.

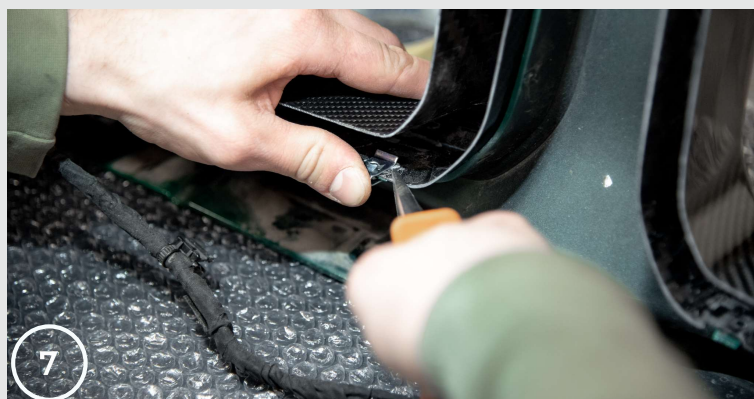
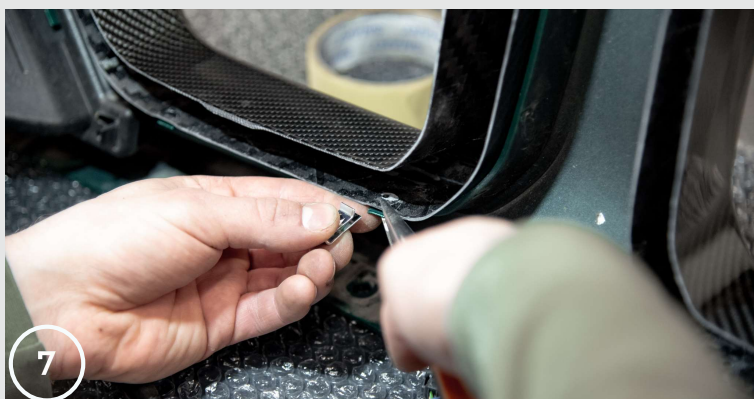


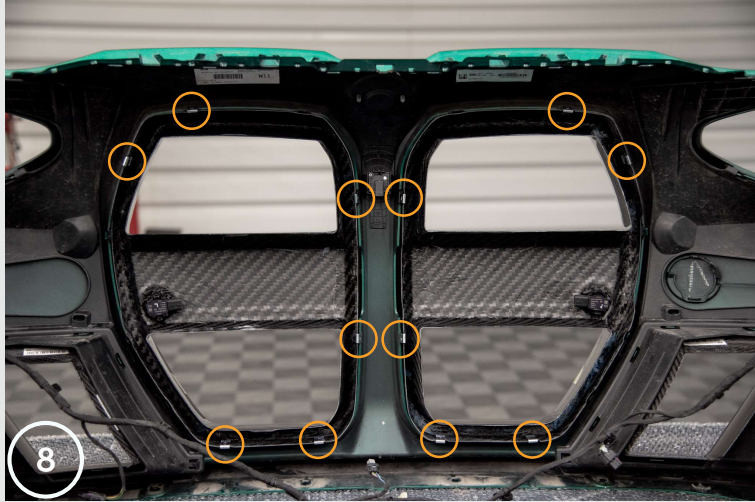


5. Insert the grill kidneys into the holes in the bumper.

6. Secure them with tape so that they do not fall out.

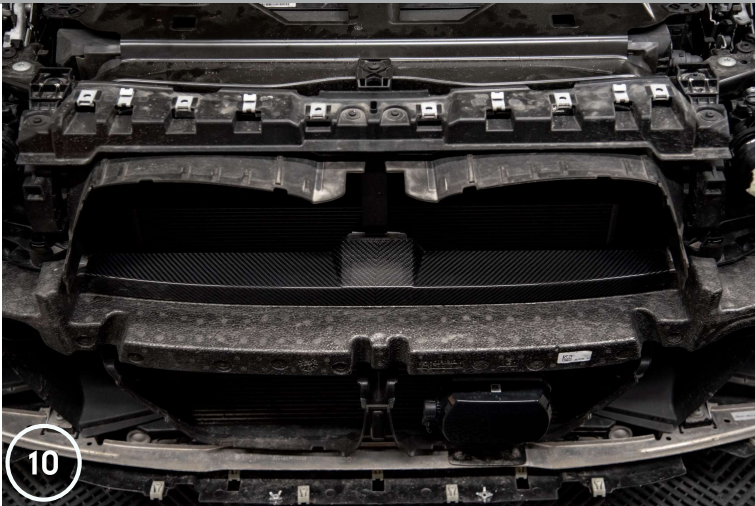
7. From the inside, attach the clips so that the bumper tabs connect with the carbon grille circuit.





- 8. Place six (6) clips around each grill kidney.
- 9. Through the holes in the clips, drill the screws.





10. Place the carbon masking element on the inside of the protective foam.

11. Place the masking element in the correct position and mark this position with tape so that a piece of tape is glued on the masking element and the other on the foam. Then cut the tape to remove the masking element.

12. Remove a small piece of tape protection from the masking element.

13. Clean and degrease the masked piece of foam. Then, according to the tape, place the masking element on the foam and press it in.

14. When you make sure that the masking element is in the right position, remove the rest of the tape protection from the masking element and press it against the foam.

15. Connect the sensors to the bundle.

16. Done. Now you can put the bumper on and enjoy your new carbon grille.

